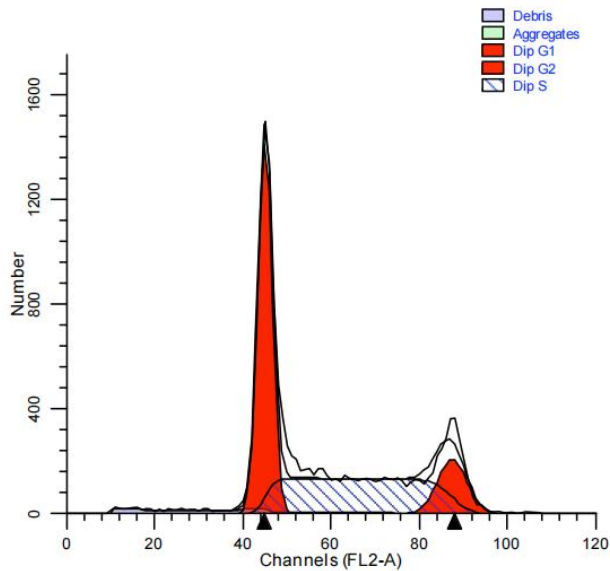


Diploid: 100.00 %
 Dip G1: 49.26 % at 48.68
 Dip G2: 9.23 % at 93.76
 Dip S: 41.51 % G2/G1: 1.93
 %CV: 3.43

Total S-Phase: 41.51 %
 Total B.A.D.: 0.92 %

Apoptosis: % Mean:

Debris: 2.66 %
 Aggregates: 0.28 %
 Modeled events: 17844
 All cycle events: 17319
 Cycle events per channel: 376
 RCS: 4.268

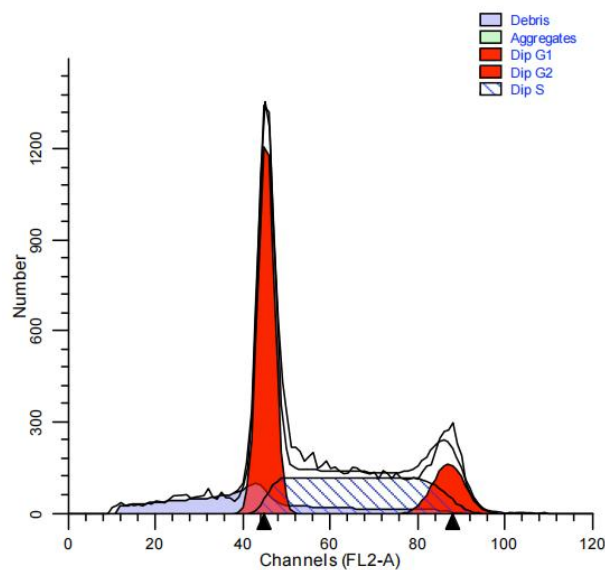


Diploid: 100.00 %
 Dip G1: 45.01 % at 45.12
 Dip G2: 13.16 % at 87.49
 Dip S: 41.83 % G2/G1: 1.94
 %CV: 3.70

Total S-Phase: 41.83 %
 Total B.A.D.: 2.06 %

Apoptosis: % Mean:

Debris: 5.46 %
 Aggregates: 0.17 %
 Modeled events: 14190
 All cycle events: 13391
 Cycle events per channel: 309
 RCS: 4.029

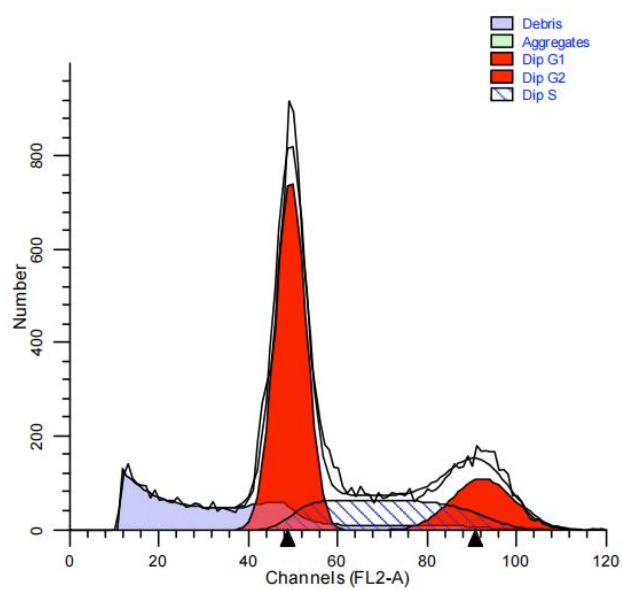


Diploid: 100.00 %
 Dip G1: 47.06 % at 45.41
 Dip G2: 12.42 % at 87.13
 Dip S: 40.52 % G2/G1: 1.92
 %CV: 4.11

Total S-Phase: 40.52 %
 Total B.A.D.: 9.34 %

Apoptosis: % Mean:

Debris: 18.43 %
 Aggregates: 0.25 %
 Modeled events: 15350
 All cycle events: 12483
 Cycle events per channel: 292
 RCS: 3.657



Diploid: 100.00 %
 Dip G1: 58.19 % at 49.55
 Dip G2: 17.39 % at 92.43
 Dip S: 24.43 % G2/G1: 1.87
 %CV: 7.04

Total S-Phase: 24.43 %
 Total B.A.D.: 7.86 %

Debris: 21.66 %
 Aggregates: 0.15 %
 Modeled events: 14389
 All cycle events: 11251
 Cycle events per channel: 256
 RCS: 2.596